



Workstation Specialists

WWW.WORKSTATIONSPECIALISTS.COM



THANK YOU FOR
PURCHASING YOUR
SYSTEM FROM
WORKSTATION
SPECIALIST.

TO RECIEVE A LOYALTY
DISCOUNT PLEASE
QUOTE PROMO CODE:

RPT-CSTM

CONTACT SUPPORT

FREE PHONE:
+44 0800 180 4801

EMAIL:
SUPPORT@WKSMAIL.COM



**QUICK START
GUIDE:**

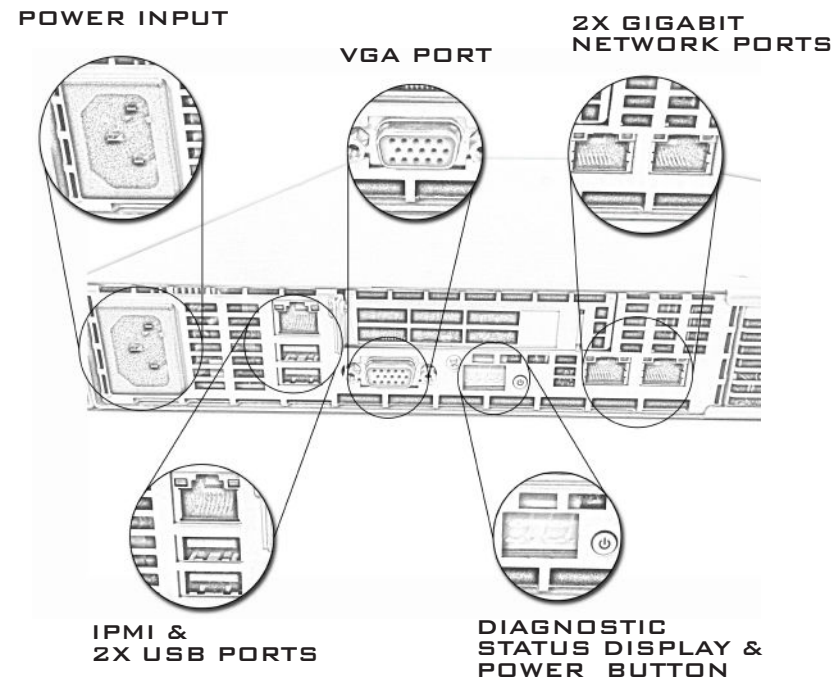
**RENDER / HPC
NODE**

QUICK START GUIDE

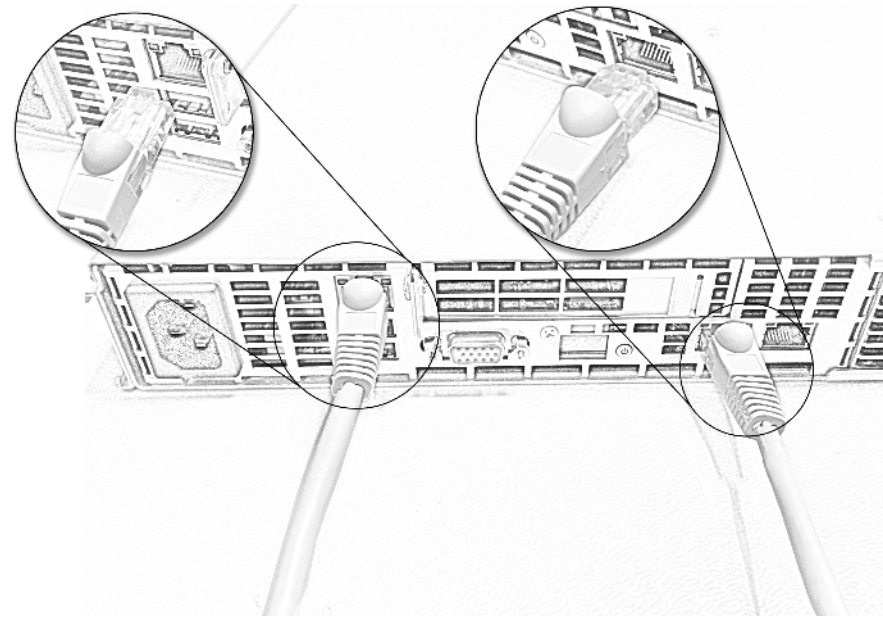
IMAGES ARE FOR ILLUSTRATION PURPOSES ONLY. SYSTEM LAYOUTS MAY VARY.

V1.2

KEY

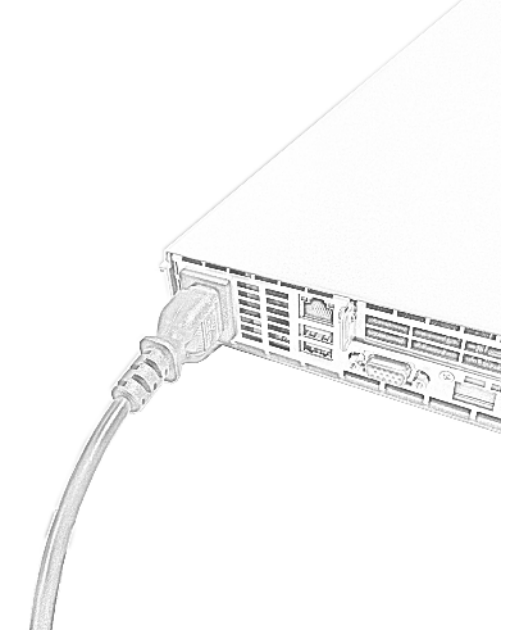


STEP 1 - IKVM/IPMI & NETWORK



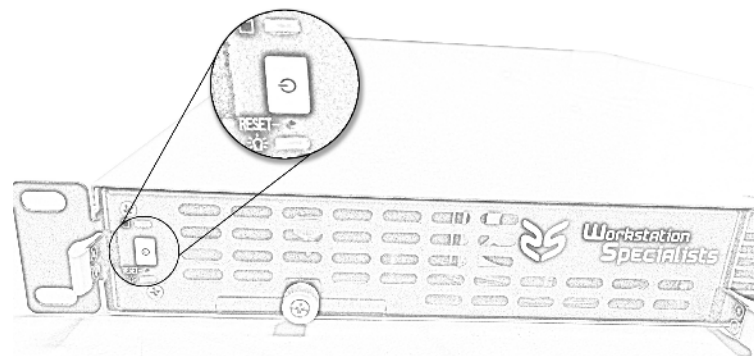
PLUG IN YOUR ETHERNET CABLE TO THE IPMI REMOTE MANAGEMENT PORT. FOR NETWORK ACCESS PLUG A SECOND AVAILABLE NETWORK CABLE INTO ONE OF THE 2X GIGABIT NETWORK PORTS.

STEP 2 - POWER



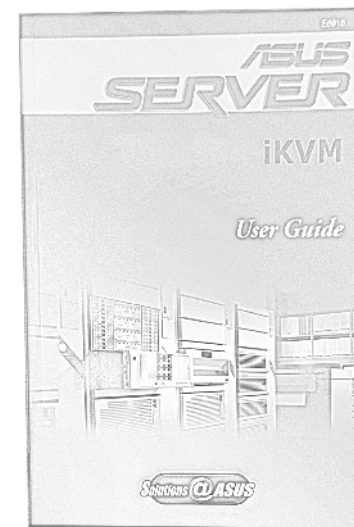
INSERT THE POWER CABLE SUPPLIED WITH YOUR SYSTEM.

STEP 3 - START SYSTEM



LOCATE AND PRESS THE POWER BUTTON ON THE FRONT OR REAR OF YOUR RENDER NODE TO POWER ON THE SYSTEM.

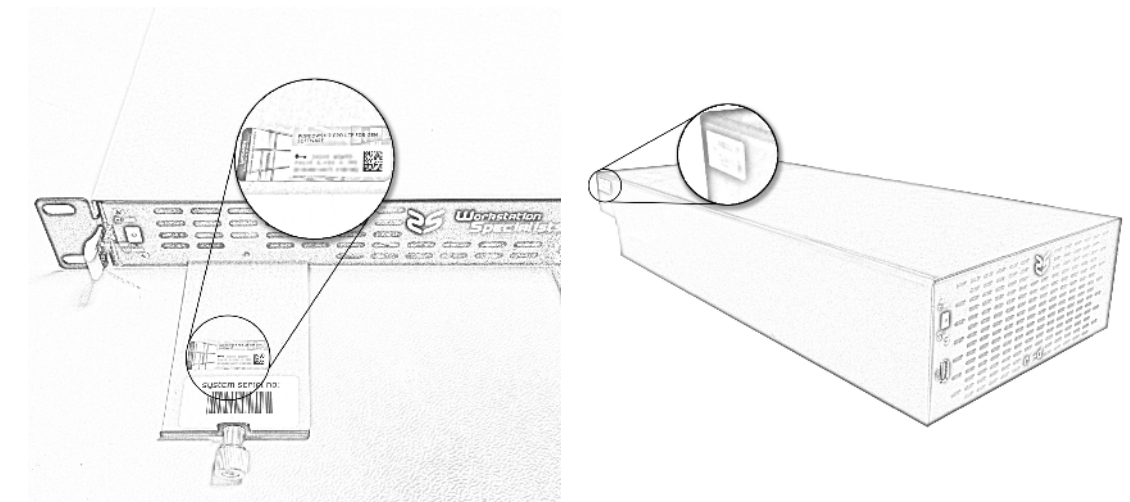
STEP 4 - IKVM/IPMI SETUP



REFER TO YOUR IKVM USER GUIDE SUPPLIED WITH EVERY WORKSTATION SPECIALISTS RENDER NODE TO REMOTE MANAGE YOUR SYSTEM. ALSO AVAILABLE ON OUR WEBSITE:

[HTTP://WWW.WORKSTATIONSPECIALIST.COM/TECHNICAL_SUPPORT/F_A_QS/](http://www.workstationspecialist.com/technical_support/F_A_QS/)

STEP 5 - ACTIVATE WINDOWS



FOLLOW THE ON-SCREEN WINDOWS SETUP WIZARD. WHEN ASKED FOR YOUR WINDOWS ACTIVATION LICENSE ENTER THE LICENSE KEY LOCATED AS SHOWN ABOVE.

*PLEASE ENSURE ALL SYSTEM AIR INTAKES AND VENTS ARE FREE FROM OBSTRUCTION.